

Tatreez Traditions



Getting Started

Visit TatreezTraditions.com to learn more

Required Materials

- 14 Count Waste Canvas + Fabric
 - Size 1-5 Embroidery Needle
 - Size 8 Pearl Cotton
- Or**
- 11-14 Count Aida Cloth
 - Size 22-24 Tapestry Needle
 - Separated Size 25 Embroidery Floss
Or Size 8 Pearl Cotton

Thread Your Needle

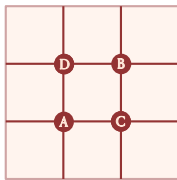
A single layer of thread is the most common way to thread your needle for Tatreez Cross Stitching.

- Cut desired length
- Thread needle
- Knot only the longer piece at the end to secure this thread. (The shorter end will remain untied)

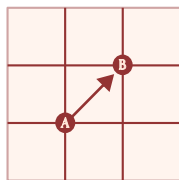


How to Cross Stitch

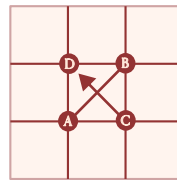
Basic Cross Stitch



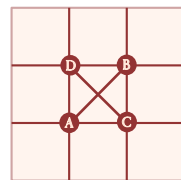
One cross stitch is made up of 4 points (A,B,C,D)



Enter point **A** from the back and stitch to point **B**

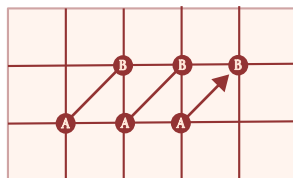


Enter point **C** from the back and stitch to point **D**

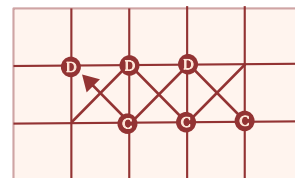


Half Stitching

To create rows or columns



To create a row, stitch from point **A** to **B** until your desired number of stitches



Stitch backwards from point **C** to **D** to complete the previous halves

A decorative pattern of overlapping, semi-transparent reddish-brown diamonds arranged in a symmetrical, tree-like or floral shape, centered on the page.

Disclaimer

This collection is not an exhaustive representation of the titled theme. For a more comprehensive understanding, please visit our [References](#) page for recommended resources.

TATREEZ
TRADITIONS

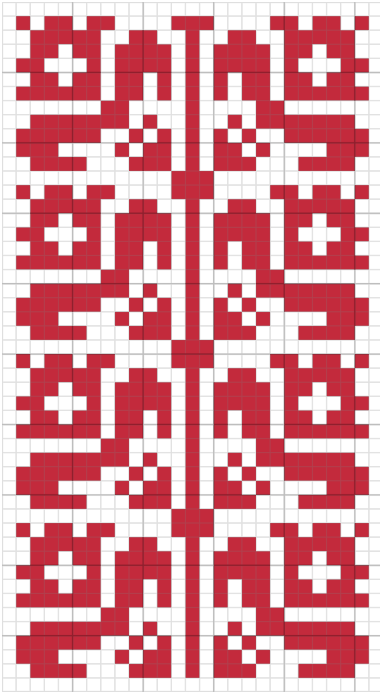
Tatreez Traditions



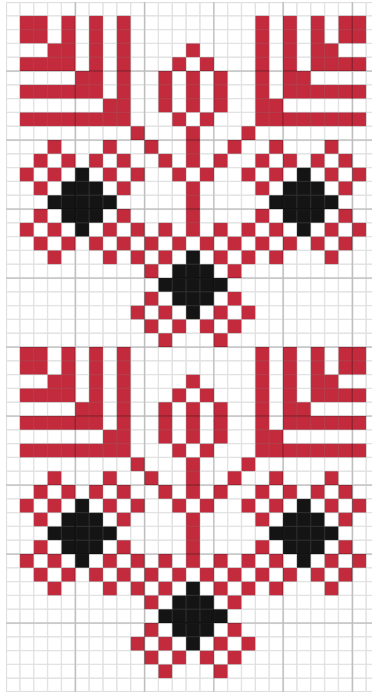
Cloves/Carnations Collection

Mixed Areas

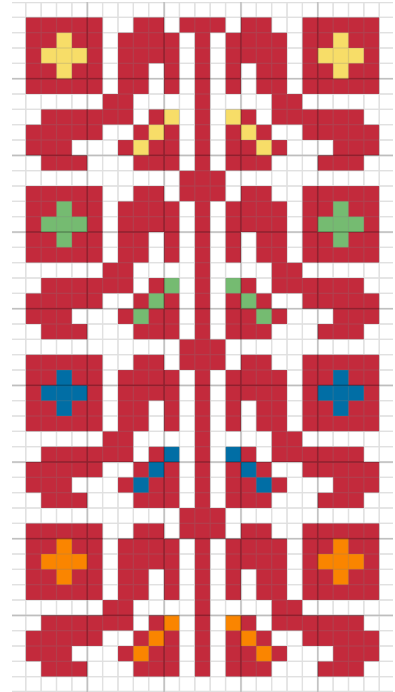
Visit Tatreez Traditions Motif Library to Explore More



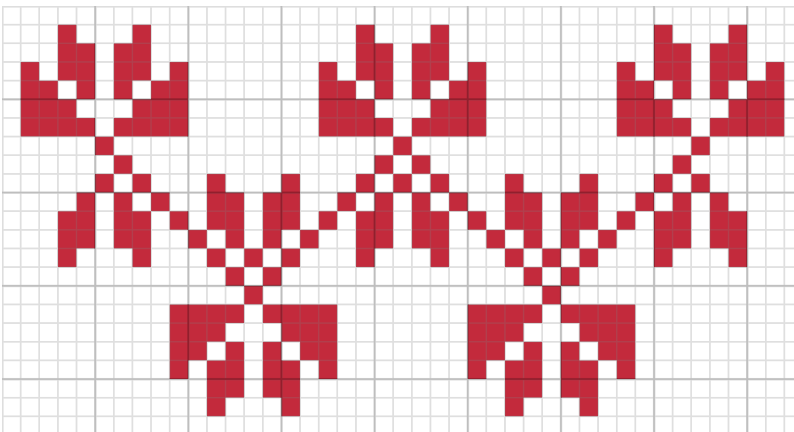
Carnation Branch
(Qrunful)
Ramallah & Area



Carnation
(Qrunful)
Ramallah & Area



Carnation Branch
(Qrunful)
Yaffa Area



Carnation
(Qrunful)
Ramallah & Area

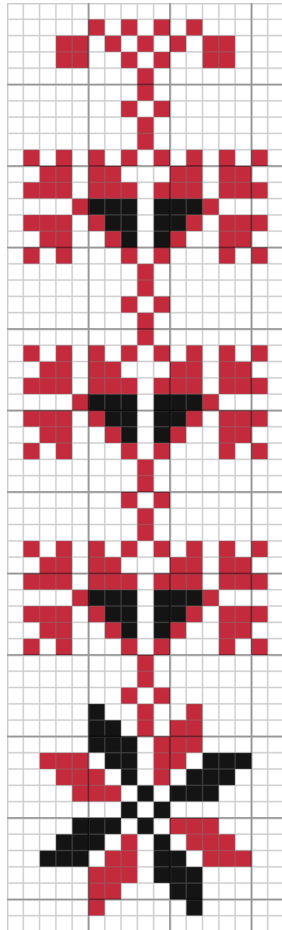
Tatreez Traditions



Cloves/Carnations Collection

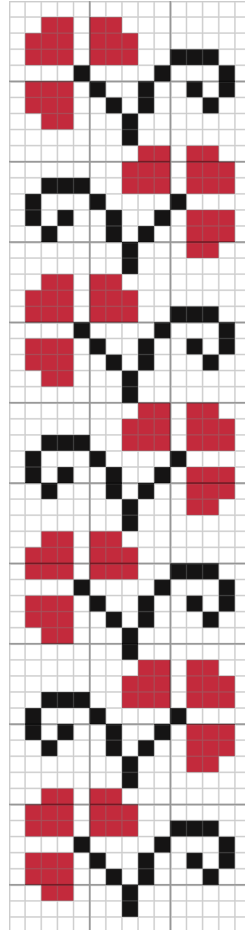
Mixed Areas

Visit Tatreez Traditions Motif Library to Explore More



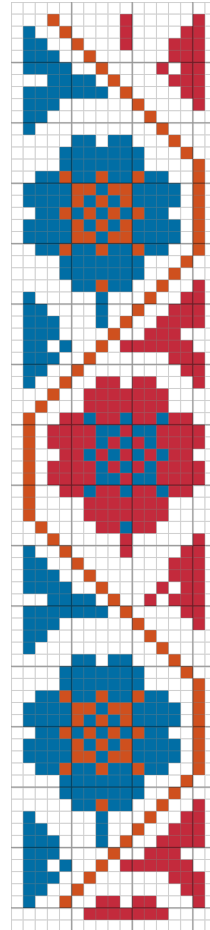
Carnation Branch

(Qrunful)
Al Khalil



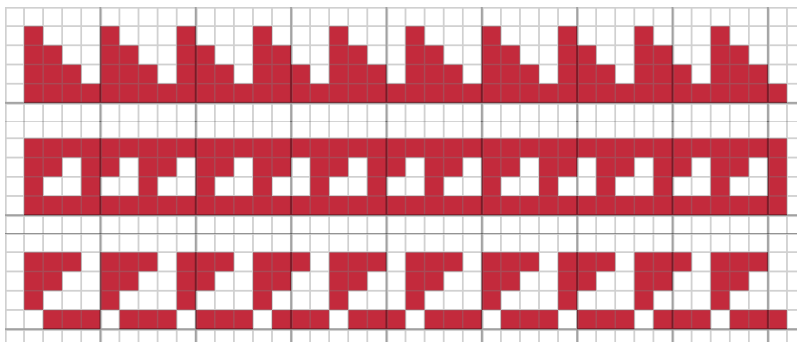
Clove

(Qrunful)
Ramallah & Area



Clove

(Qrunful)
Al Khalil



Carnation Borders

(Qrunful)
All Areas

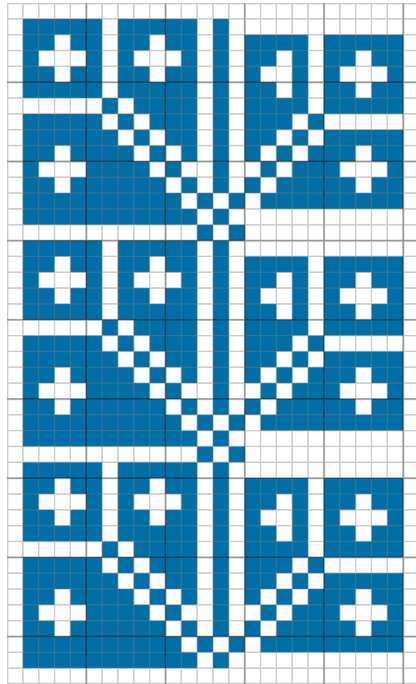
Tatreez Traditions



Cloves/Carnations Collection

Mixed Areas

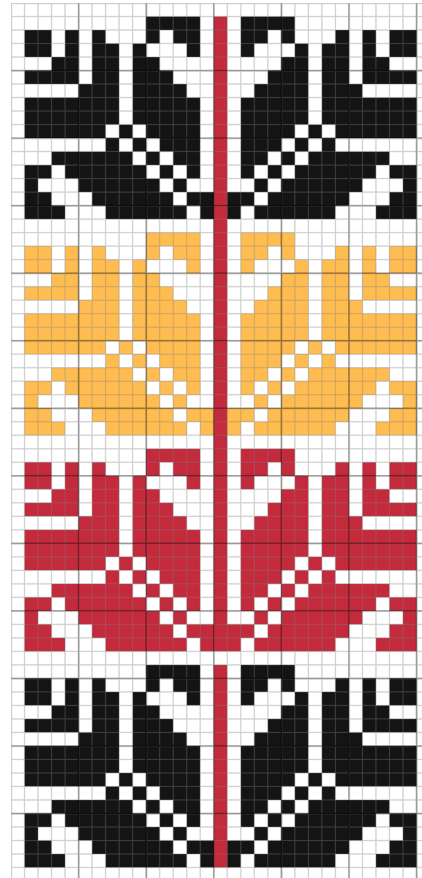
Visit Tatreez Traditions Motif Library to Explore More



Carnation Branch

(Qrunful)

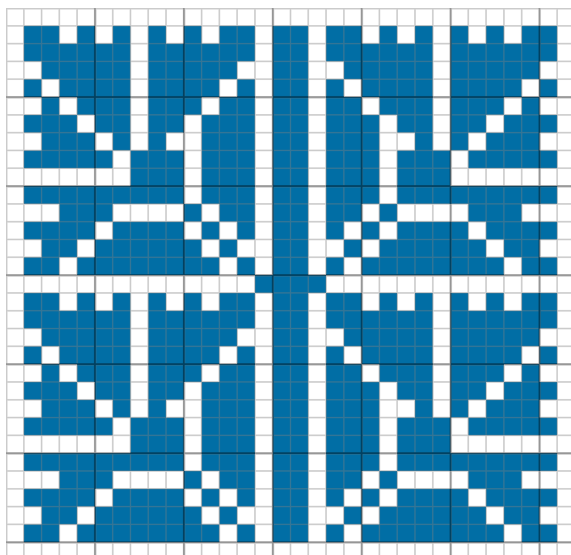
Bir Al Saba and Sinai Area



Clove

(Qrunful)

Bir Al Saba



Feathers and Carnations

(Qrunful)

Bir Al Saba and Sinai Area



@tatreeztraditions

Share your Tatreez creations with us on Instagram

TATREEZ
TRADITIONS